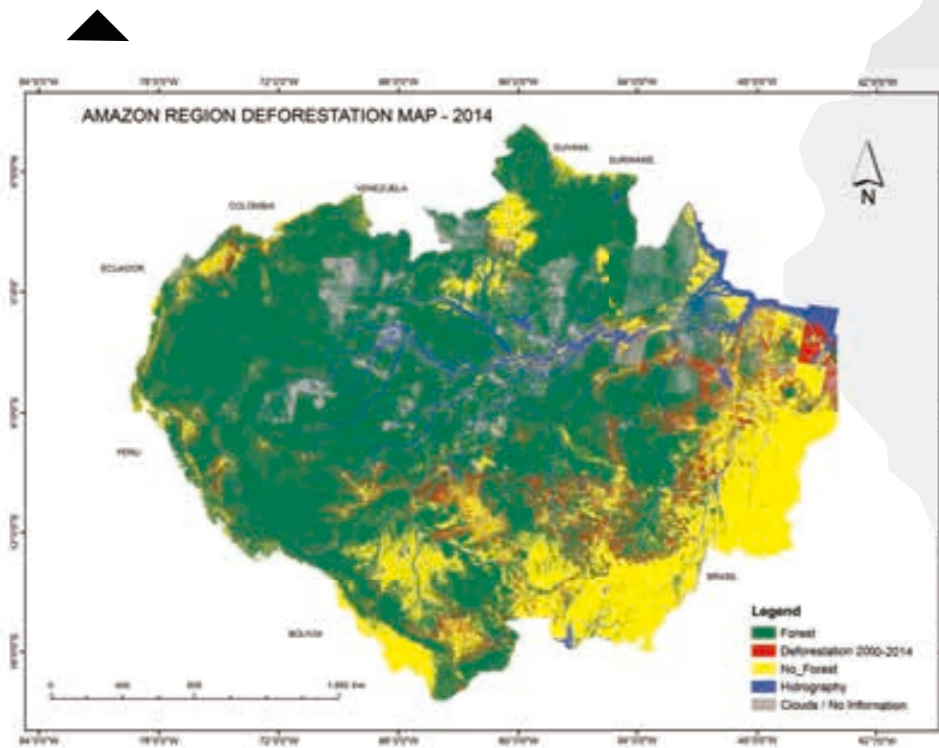


2000/2014

DEFORESTATION



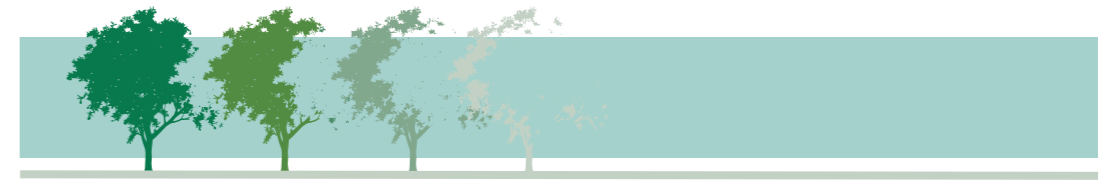
The latest map provides results for the period 2000-2014 and has been prepared from data presented by ACTO Member Countries. The definition of **Forest**, **Non-Forest**, **Deforestation** and **Cloud / No information** classes continues. It was added a class called Hydrography showing the bodies of water in the Amazon Region.

LOCALIZATION MAP SOUTH AMERICA



ACTO – Amazon Cooperation Treaty Organization
 SHIS – QI 05, Conjunto 16, Casa 21 – Lago Sul
 CEP 71615-160 – Brasília – DF – Brazil
 Phone: (55 61) 3248-4119 / Fax: (55 61) 3248-4238

www.otca.info



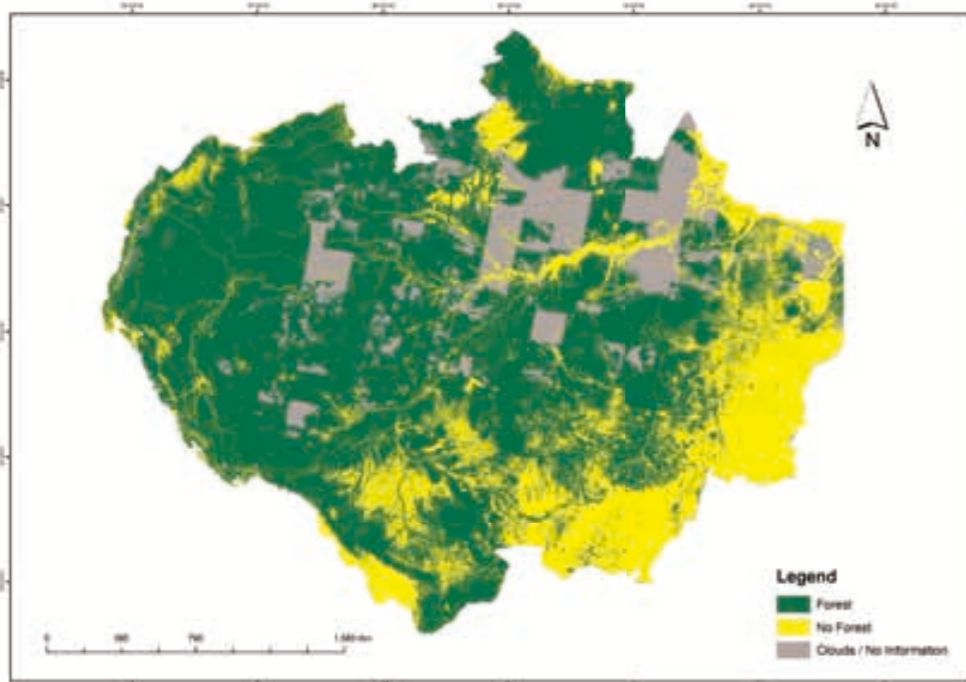
MONITORING THE FOREST COVER IN THE AMAZON REGION





ACTO MONITORING PROYECT

BASELINE 2000



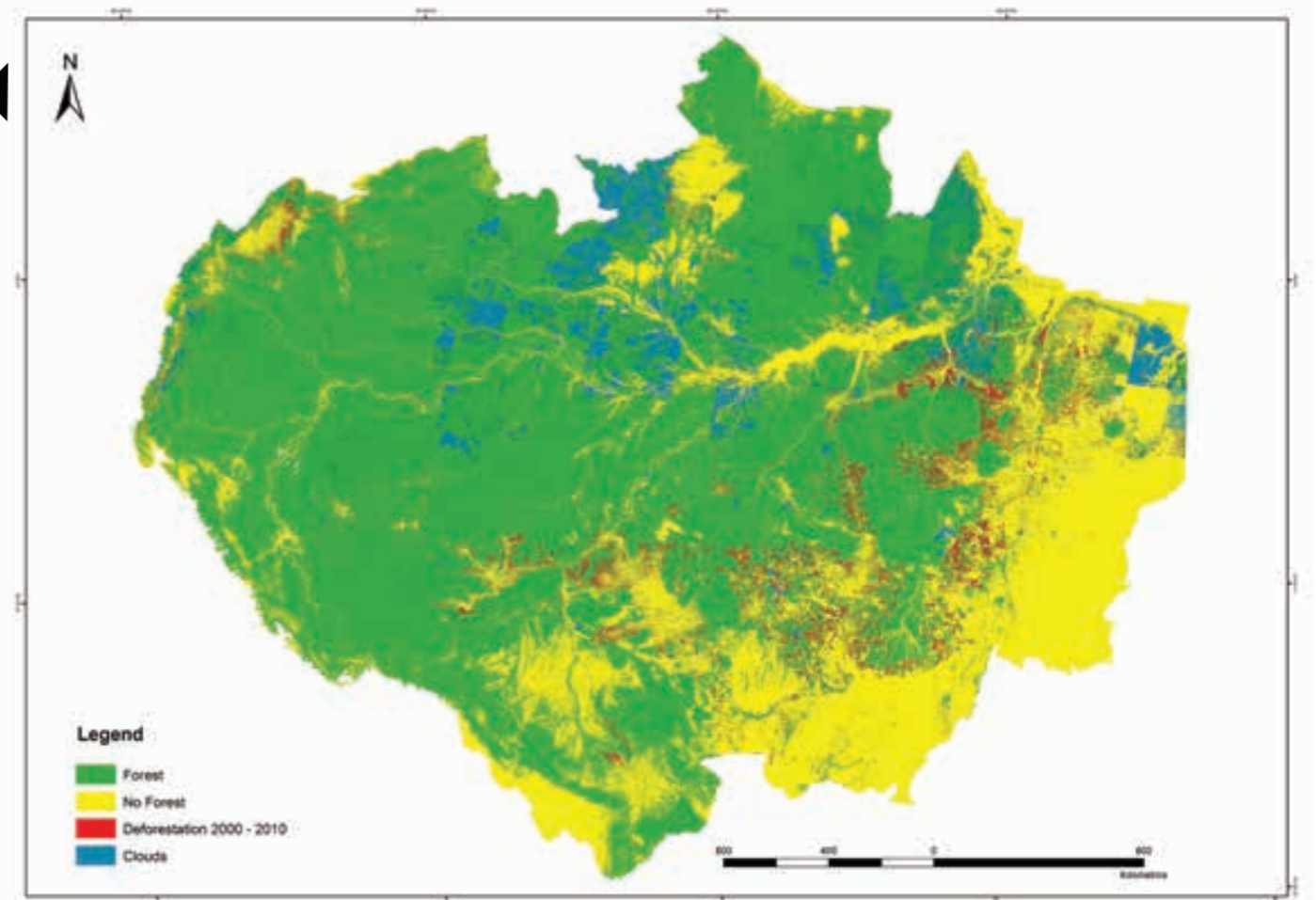
The Base Map was elaborated in the Regional Center of the Amazon of the National Institute for Space Research - CRA / INPE (Belém, Brazil), according to the agreement of the Member Countries of ACTO. Satellite images were used in order to obtain compatible and convertible data from the monitoring results of deforestation. It defined the following classes: **Forest**, **No Forest** and **Clouds / No information**.

2000/ 2010

DEFORESTATION

Presented at COP20 CC (Lima, December 2014), the map was composed by data edited by each country, gathered through criteria and synchronized methodologies that generated compatible deforestation data. The deforestation class was added allowing to visualize the deforestation dynamics carried out from 2000 to 2010.

The following classes were defined: **Forest** (area with high forest density and continuous canopy cover, forming canopy, native and little altered); **No Forest** (areas with different characteristics of forest vegetation, including areas of hydrography and human activity); **Deforestation** (area deforested in the period) and **Clouds / No information** (areas not observed or without information due to the presence of cloud cover).



2000/ 2013

DEFORESTATION

The map follows the sequence of the deforestation process obtained and presented by ACTO Member Countries. The classes' definition was maintained as **Forest**, **No Forest**, **Deforestation** and **Clouds / No information**. This map was presented at the 11th UNFF (May 2015).

